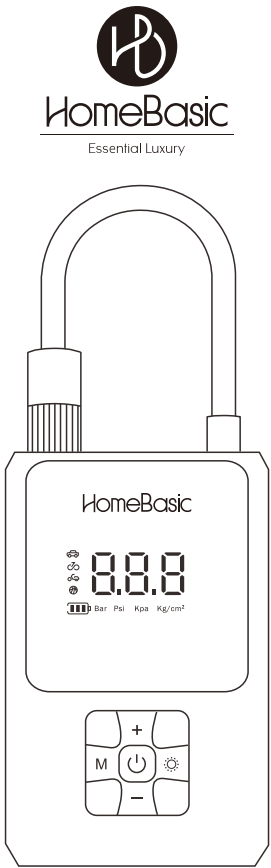


展开尺寸：210x140mm 128g书写纸双面单黑印刷 风琴折

封面



LIST OF ITEMS

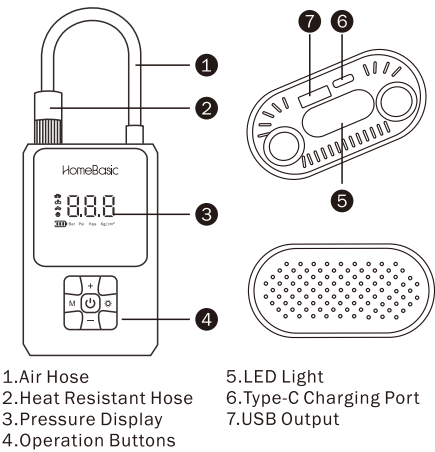
Thank you for choosing our products. If you are unpacking for the first time, please confirm the contents.

Contents:

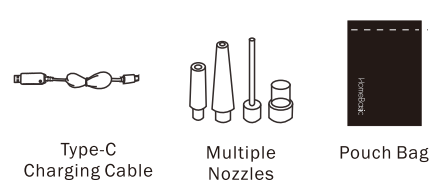
1.Air Pump	4.Type-C Charging Cable
2.Air Hose	5.Pouch Bag
3.Multiple Nozzles	6.User Manual

Read these instructions carefully and retain them for future use. If this product is passed to a third party, then these instructions must be included.

PRODUCT DIAGRAM



ACCESSORIES



PRODUCT DETAILS

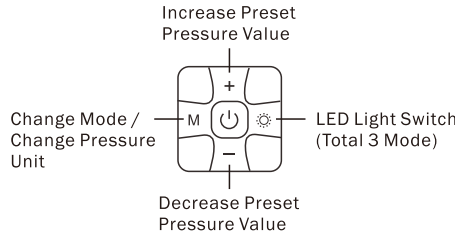
Model Type (Sedan Car / Bicycle / Motorcycle / Ball)

Pressure Display

Pressure Unit

Battery Display

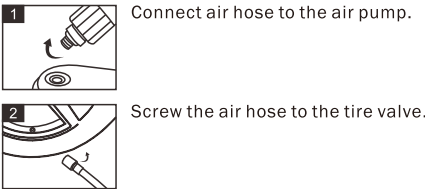
1.Display 3 Battery Symbol: 70~100% Power
2.Display 2 Battery Symbol: 40~70% Power
3.Display 1 Battery Symbol: 10~40% Power
4.Battery Symbol Flash: Less than 10% power, need to recharge



PRODUCT USAGE

NOTICE

- Before use, please check your vehicle's manual or the tire placard (usually located inside the driver's door frame) for the recommended tire pressure (usually listed in PSI or KPA).
- Before use, check that all parts (hose, pump) are intact.



封底



Experience the HomeBasic difference: durability and dependable service.

Our products are engineered for longevity and backed by a comprehensive warranty.



Don't hesitate to contact us! We're happy to answer your questions.

Prefer email? Send your questions to support@thehomebasic.com.

Need to speak with someone? Call us at (+91) 9321-008-492

HomeBasic is a registered trademark exclusively Licensed to IRIS TECH, India and its affiliated companies, and it is distributed by IRIS TECH through its channel partners.

Other reference brands and trademarks are for demonstration only. All other trademarks included herein are the intellectual property of their respective owners.

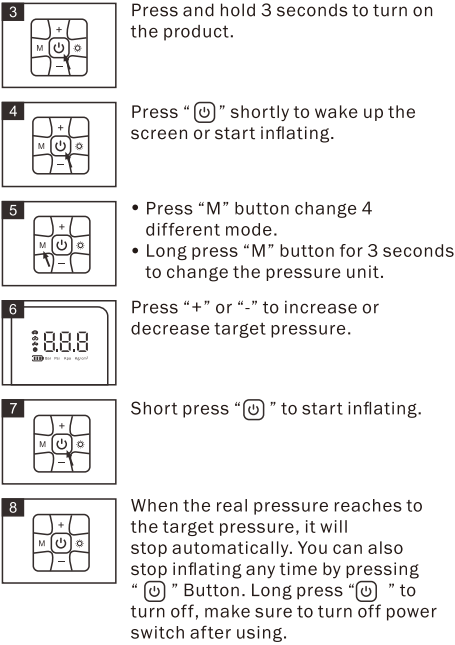
Your support is appreciated! Share your joy and tag us on social media with your new item. Check out our extensive product lineup at www.thehomebasic.com.

Website: www.TheHomeBasic.com

Instagram: /HomeBasicOfficial

Facebook: /HomeBasicOfficial

Twitter: @TheHomeBasic



PRODUCT PARAMETERS

Product Model	HB-AU1
Power	80W
Voltage	7.4V
Piston Diameter	19 mm
Max Air Pressure	150 PSI
Charging Port	Type-C
Battery Capacity	2000 mAh *2
Product Dimensions	Approx. 86 x 47.5 x 137 mm
Product Weight	Approx. 402g

CLEANING AND MAINTENANCE

- Turn off and unplug the air pump before cleaning.
- Wipe the exterior of the air pump with a damp cloth to remove dust.
- Do not use steel wire brush, abrasive cleaner or corrosive liquid (such as gasoline or acetone) or chemical to clean the product.
- Store in a dry, cool place to protect it from moisture, dust, and extreme temperatures.
- Ensure the battery is charged before storage to maintain battery health.

SAFETY INSTRUCTION

- Always read the user manual thoroughly before using the product.
- Keep the air pump out of reach of children and pets.
- Never leave the air pump unattended during use, especially when inflating.
- Do not immerse the product in water.
- Do not use the product under sunlight, high temperature or high pressure.
- Do not exposure the product to rain neither use it in water.
- Do not knock or drop the product. If the product is damaged due to collision or fall, please stop using it.
- Regularly inspect hoses and connections for any signs of wear, cracking, or leaks.
- Use the proper nozzle for the item being inflated to avoid damage or leaks.
- Avoid continuous operation for prolonged periods, as this can cause overheating.
- If air pump has been running for a while and feels hot, turn it off and allow it to cool down before resuming use.
- It is recommended to turn off product and have it cool for 30 minutes after constant use of 10 minutes.